



PROJECT *In-Tree*

Introduced tree species in European forests:
challenges and opportunities



PROJECT IN-TREE

- History:

- Emotional discussion, often not evidence based
- Contradicting perspectives (forestry, gardening, nature conservation, society, hunting)
- Definitions and terms are used in different ways

- Background:

- Funded by the German Federal Ministry for Food and Agriculture (BMEL)
- Coordinated by the European Forest Institute (Central European Regional Office EFICENT)
- Scientific advisory board





PROJECT IN-TREE

Scientific advisory board

- Annemarie Bastrup-Birk (EEA)
- Marco Conedera (WSL, Switzerland)
- Franz Essl (University of Vienna, Austria)
- Andreas Rigling (WSL, Switzerland)
- Etienne Branquart (Biodiversity Platform Wallonie, Belgium)
- Hans-Gerhard Michiels (Forest Research Institute FVA, Germany)
- Jürgen Bauhus (University of Freiburg, Germany)
- Jan Wunder (WSL, Switzerland)



PROJECT IN-TREE

- **History:**

- Emotional discussion, often not evidence based
- Contradicting perspectives (forestry, gardening, nature conservation, society, hunting)
- Definitions and terms are used in different ways

- **Background:**

- Funded by the German Federal Ministry for Food and Agriculture (BMEL)
- Coordinated by the European Forest Institute (Central European Regional Office EFICENT)
- Scientific advisory board

- **Major deliverables:**

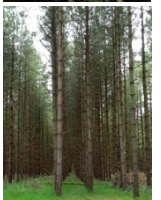
- Book publication
- Expert exchanges
- Media tools
- Expert database (Risk platform)
- Various events

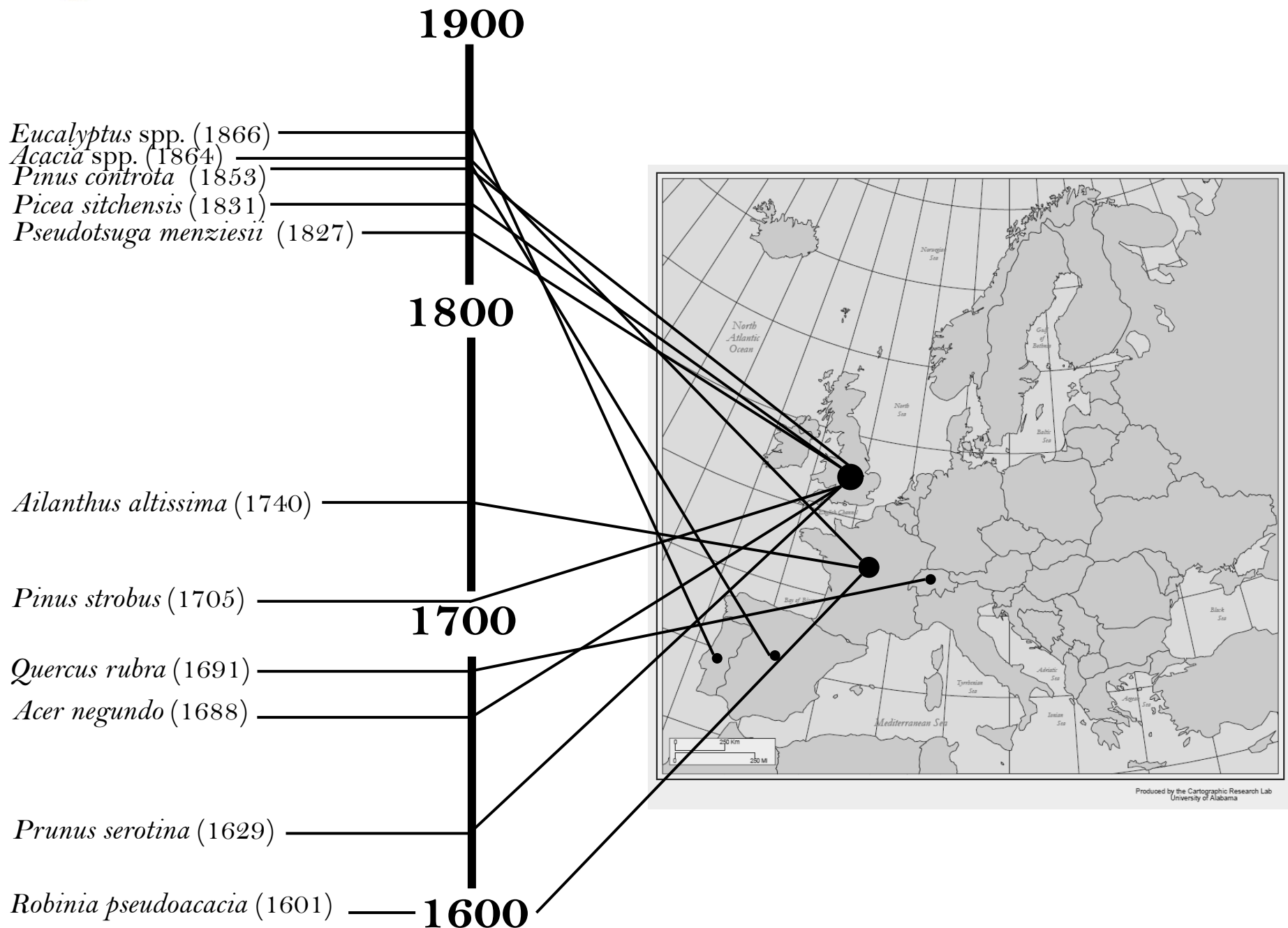




Book publication

- Topic: Introduced tree species in European forests: opportunities and challenges
- Targeted audience:
 - All backgrounds (forestry, environmental science, ecology, etc.)
 - Politicians and decision makers
 - Academics
 - Practitioners
 - Students
 - Enthusiasts







Book publication: authors

- Selection of authors:
 - Proven track of:
 - Relevant experience
 - Academic record of relevant literature
 - EFI and *IN-TREE* team's network
 - Availability
 - Recommendations of experts and advisory board
 - International Symposium in July 2015
- What's expected:
 - Contribution by the end of 2015/beginning of 2016
 - Review other chapters
 - Translations into French and German
 - Facts and evidence based information





Book publication: aims

- To synthesise current knowledge on introduced tree species across the European continent
- To comprehensively present key challenges and opportunities:
 - Climate change
 - Pests and diseases
 - Ecosystem services
- To provide a neutral knowledge and evidence-based platform for future activities

*Fact and evidence based
compilation of scientific
knowledge*





Book publication

Added value:

- Comprehensive and concise publication
- Open access
- Directed at a wide range of audience
- Disseminated through a wide EFI network and others





Content

1) Introduction

- History of introduced tree species
- Terminology and definitions

2) Management concepts and approaches

- Risk assessment and theoretical framework
- Theoretical support and approaches aiding practical forest management
- Practical insights into management of introduced and invasive tree species

3) Key challenges

Changing climate

Pests and diseases

Ecosystems services

Social aspects

Economic aspects

Natural disturbances

4) Case studies

Robinia pseudoacacia

Picea sitchensis

Prunus serotina

Eucalyptus globulus

Pseudotsuga menziesii

Ailanthus altissima

Acer negundo

Acacia dealbata

5) Compilation of key messages

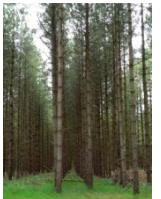




Content

Authors

- ✓ 70 authors from research and practice
- ✓ from 19 different countries across Europe and beyond
- ✓ Representing 40 different institutions

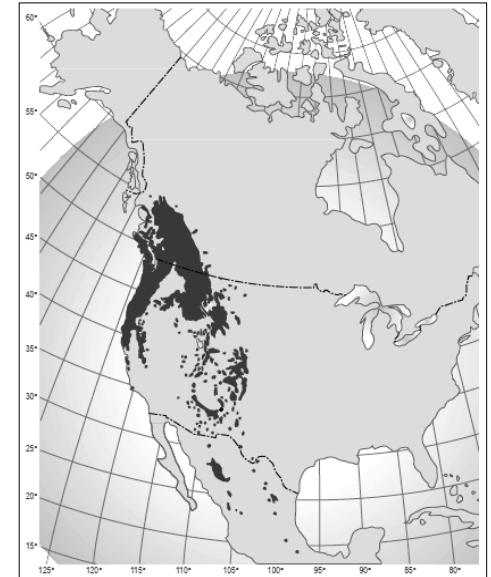




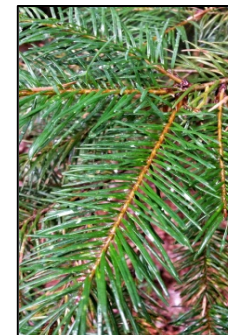
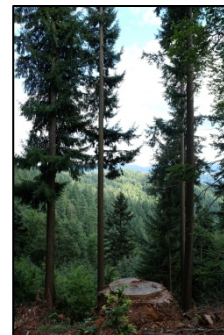
Douglas fir

Pseudotsuga menziesii (Mirb.) Franco

- 1792: discovered and described
- 1827: seeds were first brought to Europe
- Areas in Europe (SOEF, 2015):
 - France: 401,000 ha
 - Germany: 217,600 ha
 - UK: 48,000 ha
 - Belgium: 29,200 ha



amended from Little (1971)



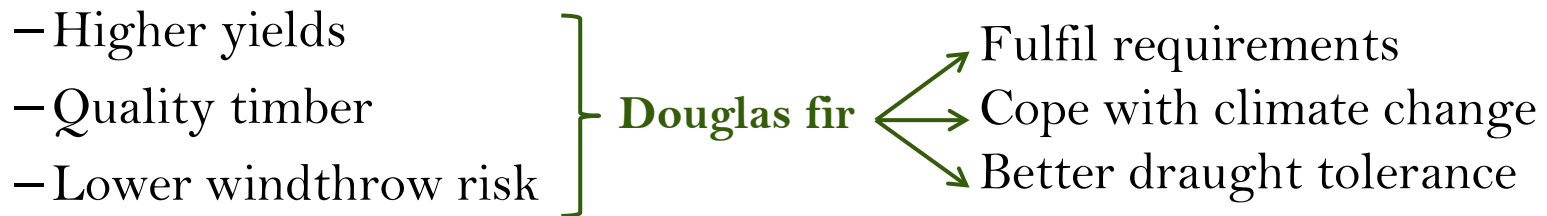
Photos: L. Vitkova



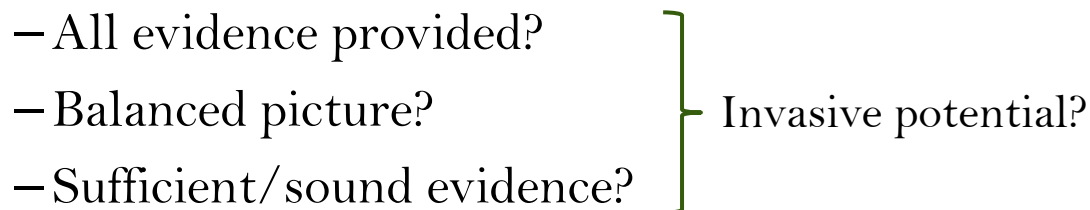
Douglas fir

Pseudotsuga menziesii (Mirb.) Franco

- Search for forest tree species



- Debate: Nature conservationists vs. Foresters





Key terms and definitions

Term	Definition	Source
Introduction	A process (or an action) that enables a species (or its propagule) to overcome, through a human agency, a major geographical barrier.	Amended from Richardson <i>et al.</i> (2000)
Introduced species	A species in a given area whose presence there is due to intentional or accidental introduction as a result of human activity.	Gassmann and Weber (2006)
Native species	Species that have evolved in a given area or that arrived there by natural means without the intentional or accidental intervention of humans from an area where they are (or had been) native.	Amended from Pyšek <i>et al.</i> (2004)
Naturalisation	Process whereby the species establishes new self-perpetuating populations, undergoes widespread dispersal and becomes incorporated within the resident flora.	Richardson <i>et al.</i> (2000)
Invasion	A process whereby a species must overcome a series of barriers to be able to spread into novel areas in which it becomes dominant.	Amended from Valéry <i>et al.</i> (2008)
Invasive species	A species that has been naturally reproducing in large numbers over considerable distances causing negative impact on local ecosystems; i.e. by direct competition for natural resources.	-

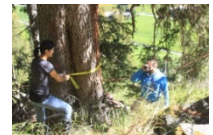
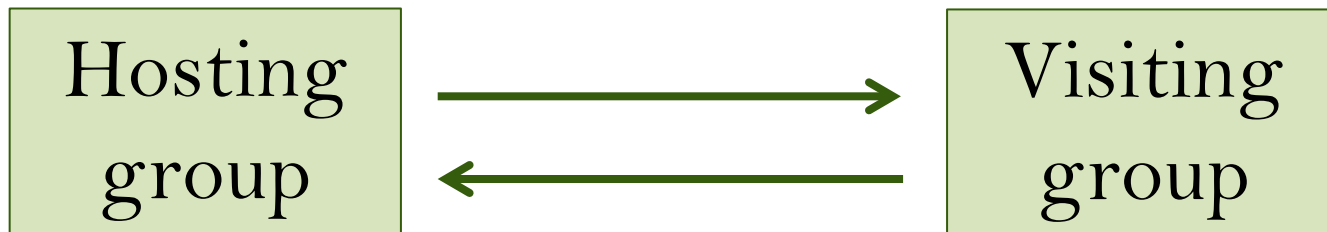
- Avoid confusion and misunderstanding
- Ensure clarity of the definitions

} Ensure consistency of the terms used throughout the book



Expert exchanges

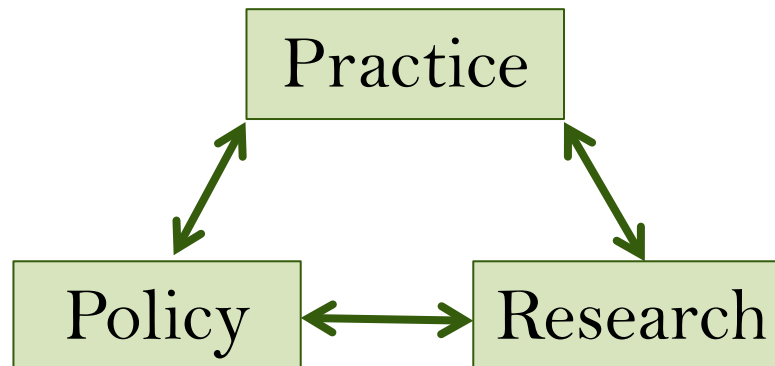
- Themed on-site discussions
 - Facilitate the transfer of skills and experience
 - Based on knowledge and experiences from other countries





Expert exchanges - aims

- Allow for on-site discussions and exchanges between various groups
- Showcase management scenarios
- Facilitate the adoption of specific management practices
- Enhance contacts network





Expert exchanges: participants

- Group size: 4 – 8 participants
- About participants:
 - Willingness to learn
 - Active engagement & contribution in constructive discussion
 - Consider incorporating management strategies



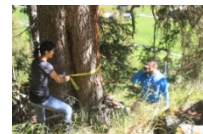
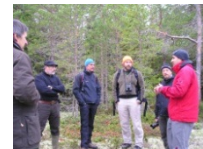


Expert exchanges

- Topics
 - Wildlife management
 - Forest risks
 - Biodiversity
- Groups
 - Ireland <-> Germany
 - Czech Republic <-> Germany

Frisk-Go

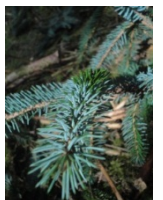
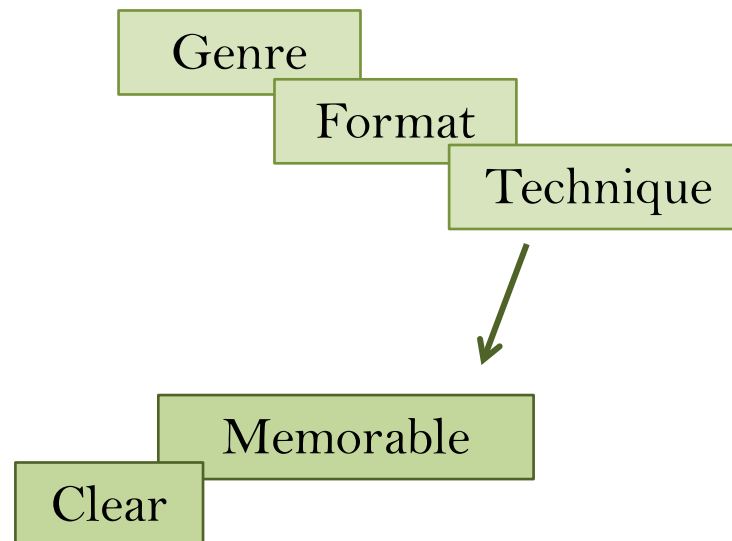
Integrate⁺





Media tools

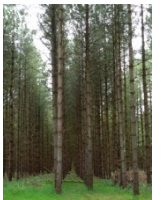
- Call for proposal to Film Academy
- **Aim:** transfer of scientific findings in the most comprehensive and effective way to a wide range of audience
- **Means:**
 - Short film
 - Cartoon
 - Acoustic/musical means





Media tools – content

- Reasons for species introductions
- Spread of ITS in their non-native environment
- Risks, opportunities and challenges regarding ITS
- The role of climate change in the context of ITS
- The link between ITS and their potential to become invasive





Past events

- Advisory Board Meeting (9th June 2015)
 - Jürgen Bauhus (University of Freiburg, Germany)
 - Marco Conedera (WSL, Switzerland)
 - Hans-Gerhard Michiels (FVA, Germany)
 - Andreas Rigling (WSL, Switzerland)
 - Jan Wunder (WSL, Switzerland)
 - Annemarie Bastrup-Birk (EEA, Denmark)
 - Etienne Branquart (Biodiversity Platform, Belgium)
 - Franz Essl (University of Vienna, Austria)
- Authors' workshop (29 – 30th June 2015)





Future events - Conference

- Topic:

Introduced tree species to European forests:
challenges and opportunities

- Audience:

- Policy makers
- Researchers
- Academics
- Practitioners

} Various backgrounds

Autumn 2016





Risk platform

An information exchange platform for experts

Christop Suter

Geotest AG

GEOTEST



Risk platform

About us

GEOTEST AG was founded in 1962
public limited company
head office: Zollikofen (Bern), Switzerland

around 130 employees

- geologists
- geographers
- engineers
- geophysicists
- pedologists / natural scientists
- specialists in geographic information systems (GIS)
- technicians in measurement technology

accredited according to SN EN ISO 9001:2000
accredited laboratory according to ISO/IEC
17025

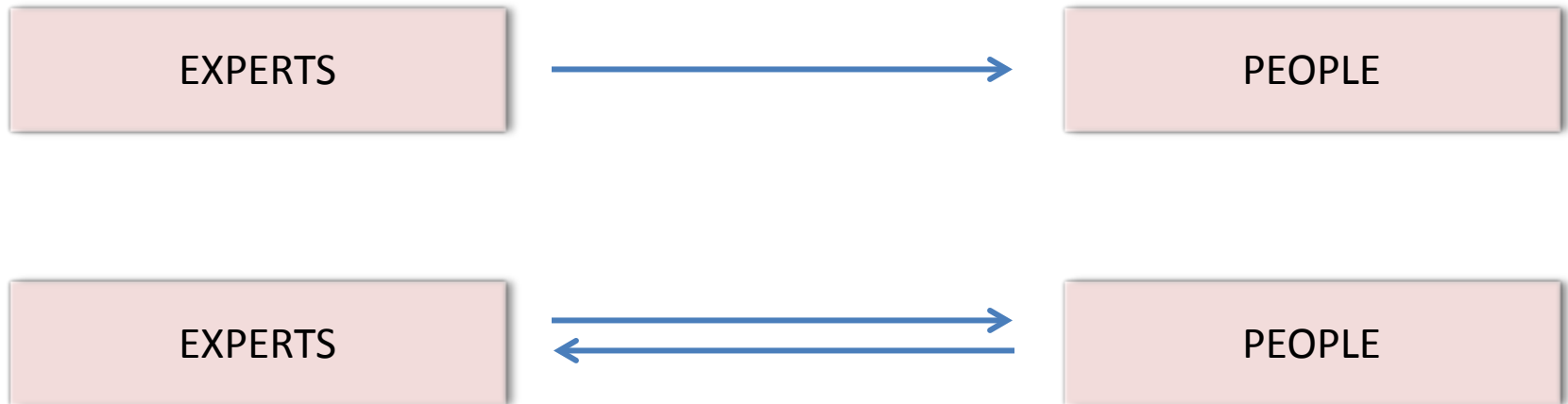
internet: www.geotest.ch





Risk platform

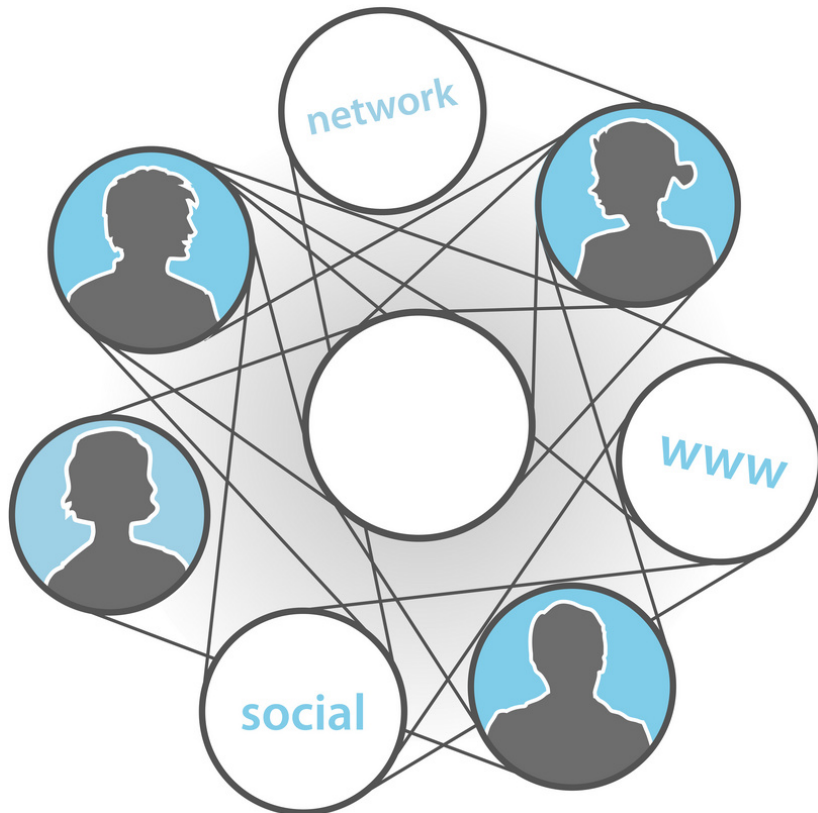
The art of communication





Risk platform

Who is an expert?



=

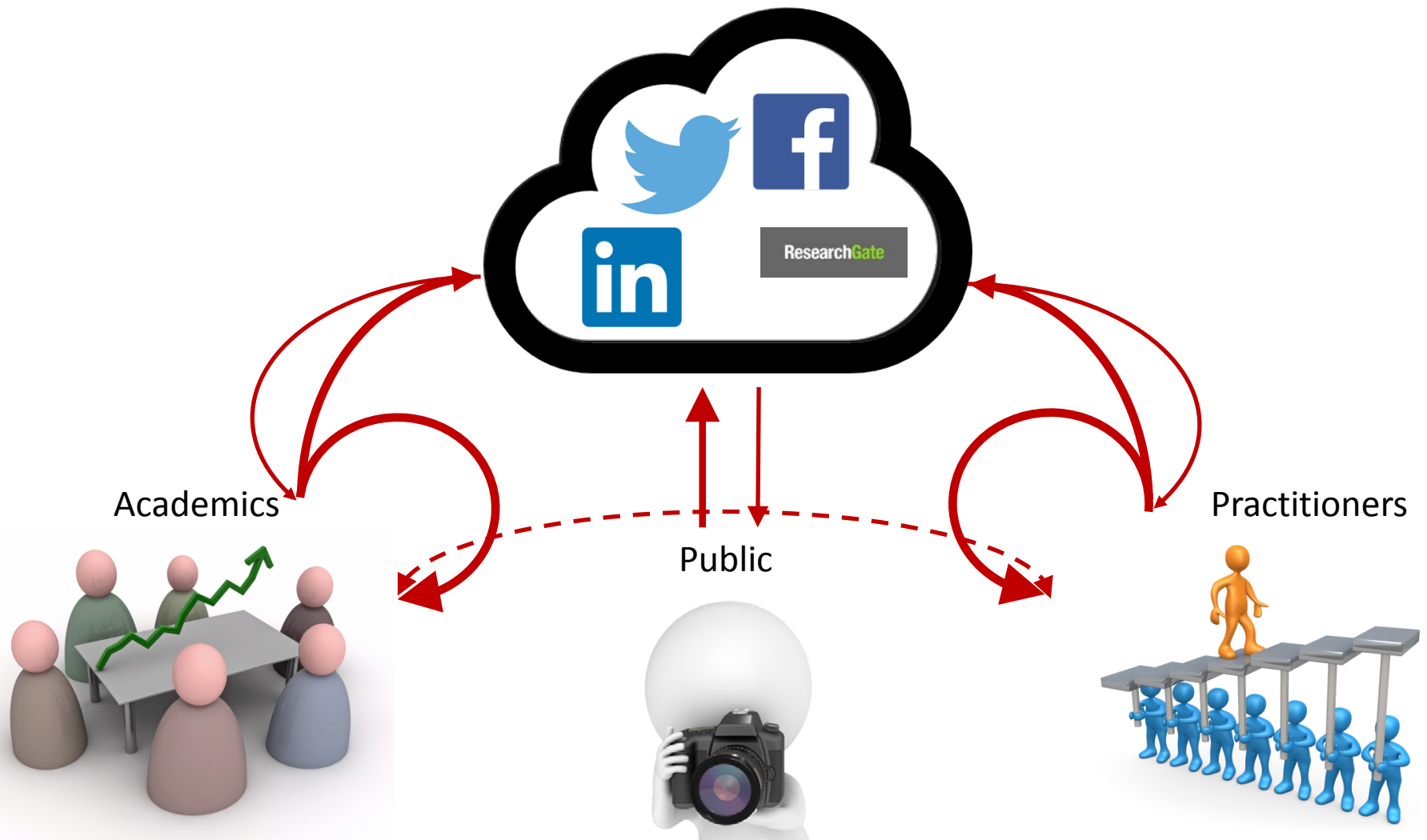


RISKPlatform



Risk platform

Use of social networks





Risk platform

Linking the relevant contacts

Risk Platform's 'Expert Database' will provide suggestions of the most relevant contacts for a specific scenario



- Users have a **profile** and are connected to other users.
- Users can create, upload content and connect to **Use Cases**.
- Users can **rate** the experience of others based on their contribution to a scenario



Risk platform

Chaos? Who is an expert?

- Users can rate other users and comments


- A user with a high rating (= expert) has bigger influence with his rating than others

- Observations with high rating are more important and will be showed on top









Risk platform

 RISKPlatform

Search...

  Christoph Suter 

Christoph Suter

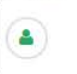







Works at [GEOTEST AG](#)
HEAD OF GEOINFORMATICS

FROM / LIVES IN
Zimmerwald

EMAIL ADDRESS
linkedin@stumpi.ch


8 CONNECTION(S)



Open Use Case participation proposals


You are proposed as **Developer** for Use Case **Ein kleiner Test** by Frank Krumm

[View](#) [Accept](#)



[ROBERT PFEIFER](#) works for Use Case [AILANTHUS TICINO](#) as **Other**


ABOUT A MONTH AGO



[ROBERT PFEIFER](#) posted a new message on Use Case [EIN KLEINER TEST](#).

ABOUT A MONTH AGO

Larissa
tu est une belle zebre !
P.S. Aber zur Zeit kann Larissa das nicht lesen.



[FRANK KRUMM](#) added a new Tag to his knowledge

[Introduced species](#)

ABOUT A MONTH AGO

My Keywords


[Edit my Keywords](#)


[Computer Science](#) [Database](#)


[PostgreSQL](#)

My Use Cases


[View all Case Studies](#)

[Expert Database](#) [View](#) 

[Ein kleiner Test](#) [View](#) 


[Test3](#) [View](#) 

Proposed Experts

 [Zum Thor](#)




Risk platform



Search...

Christoph Suter






Christoph Suter

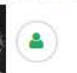


Works at **GEOTEST AG**
HEAD OF GEOINFORMATICS

FROM / LIVES IN
Zimmerwald

EMAIL ADDRESS
linkedin@stumpi.ch

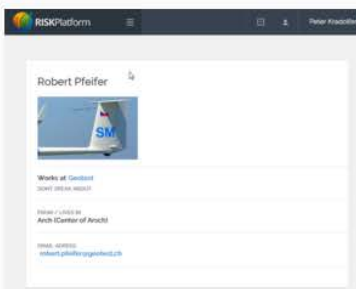
8 CONNECTION(S)





Use Case: Expert Database

Overview



With the expert database the connection between science and practices will be established. Juhui.

For more Information please visit the [Expert Database Platform](#).

Edit

Users

Project Leader	Christoph Suter	
Administration	Peter Kradolfer	Hanspeter Mustermann
Other	Frank Krumm	

Rating

Add me

Add somebody

Overall ranking

Science



Risk platform

Possibilities

- Use RISKPlatform as an expert database. Share, collaborate and enhance your network.
- Get most useful information from the field. E.g. observations documented with photos
- Use the information from other networks, not only the scientific view
- Use your rating for your CV



www.in-tree.org

With support from



Federal Ministry
of Food
and Agriculture

by decision of the
German Bundestag



EFICENT

GEOTEST