



# Biological introductions to our environment

Dr. Lucie Vítková

E: [lucie.vitkova@efi.int](mailto:lucie.vitkova@efi.int)

T: +49 (0) 761 4018 142

Verena Quadt

E: [verena.quadt@efi.int](mailto:verena.quadt@efi.int)

T: +49 (0) 761 4018 474

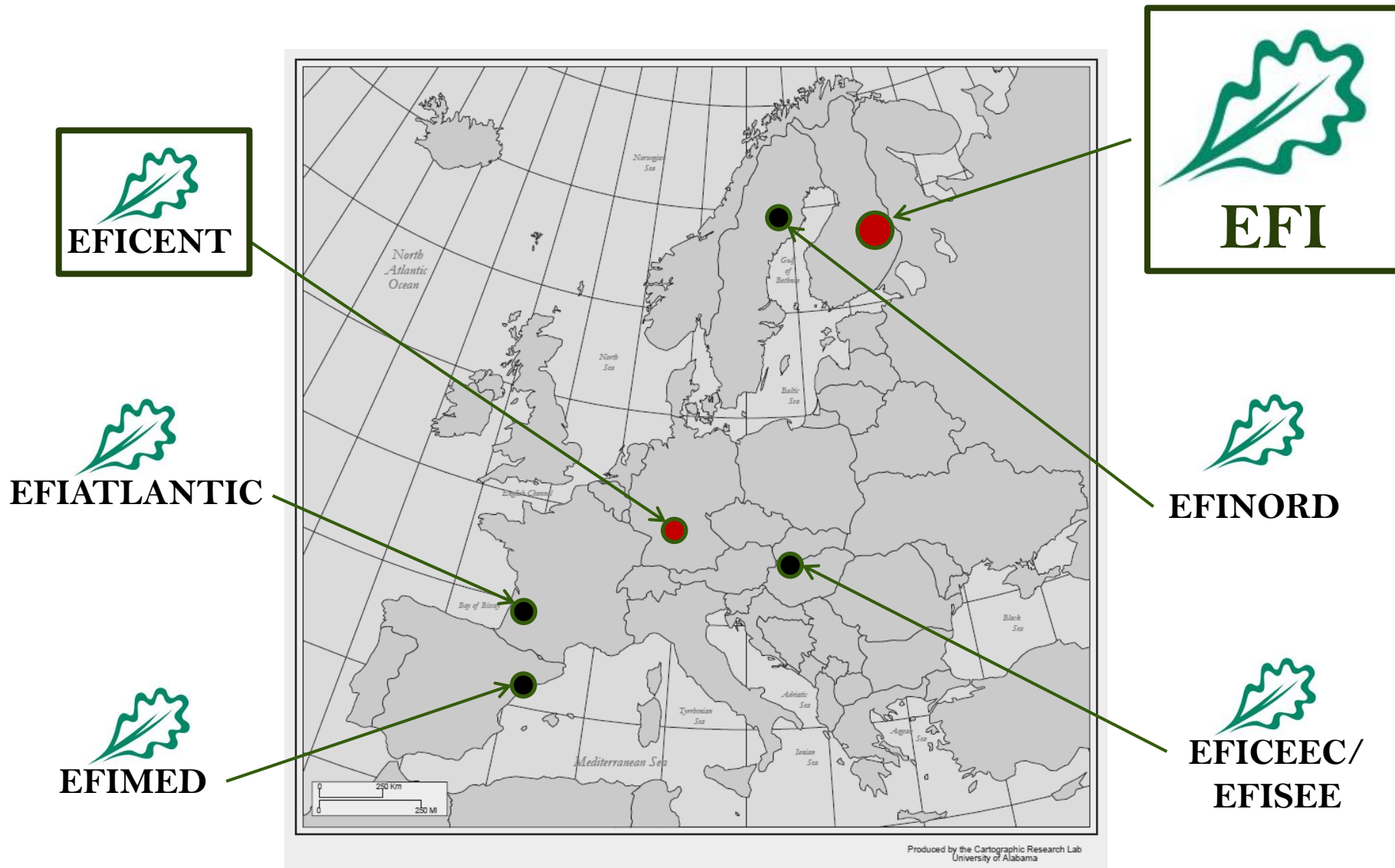


**European Forest Institute**

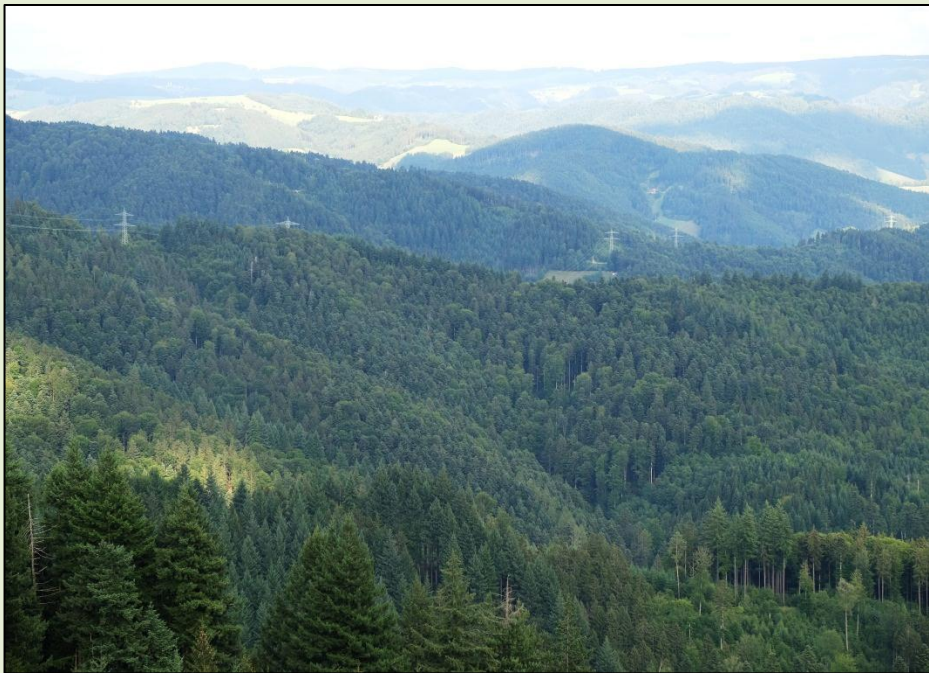
Central European Office EFICENT, Wonnhaldestr. 4, 79100 Freiburg



# European Forest Institute (EFI)











# Biological introductions to our environment

## Introduced species:

A species in a given area whose presence there is due to intentional or accidental introduction as a result of human activity

Worldwide  
introductions of all  
kinds →

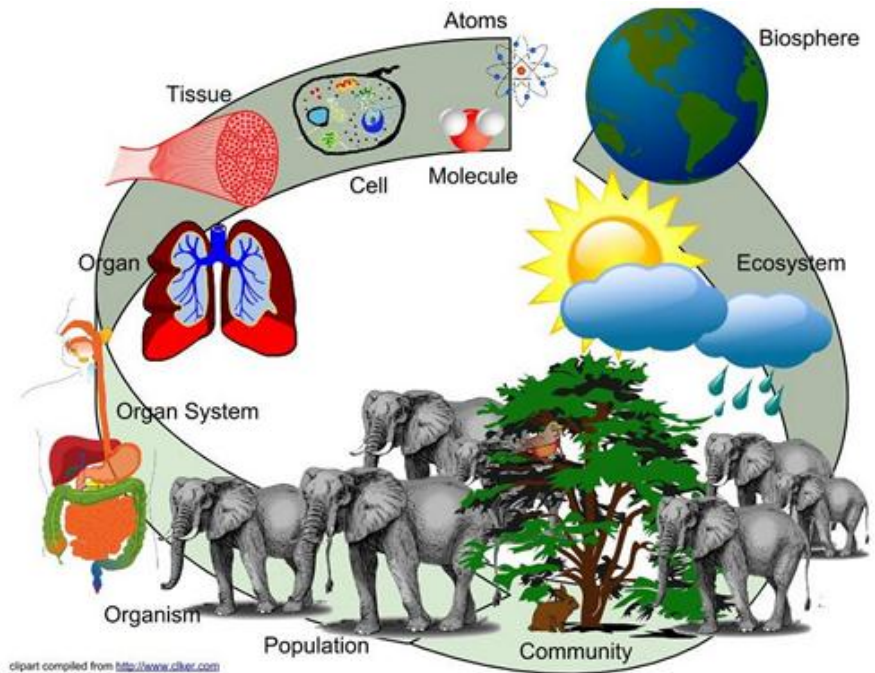




# Biological introductions to our environment

Biology – the study of living things that:

- Are organized
- Require energy
- Respond and interact
- Reproduce
- Adapt and develop





# Intentional vs. accidental



Douglas fir



Asian long-horn beetle

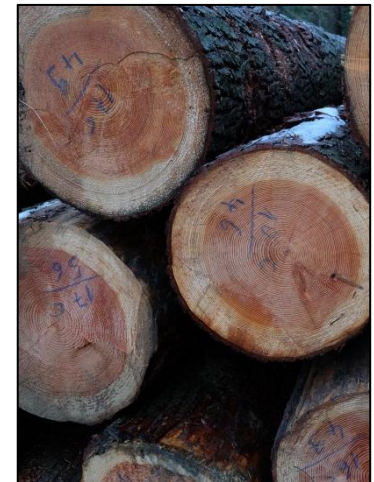
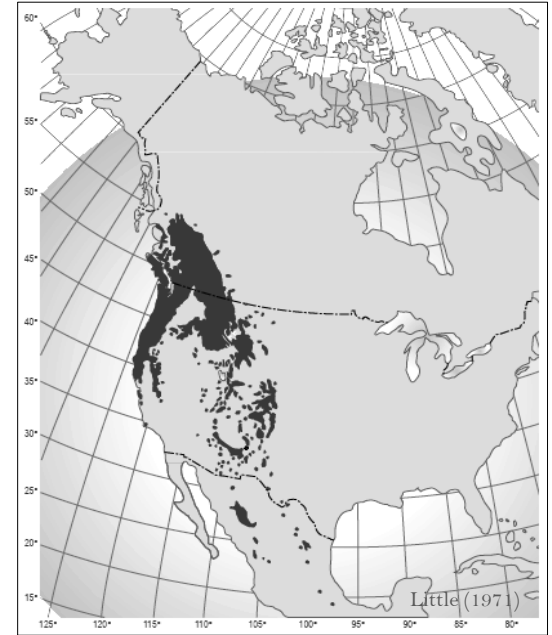






# Douglas fir

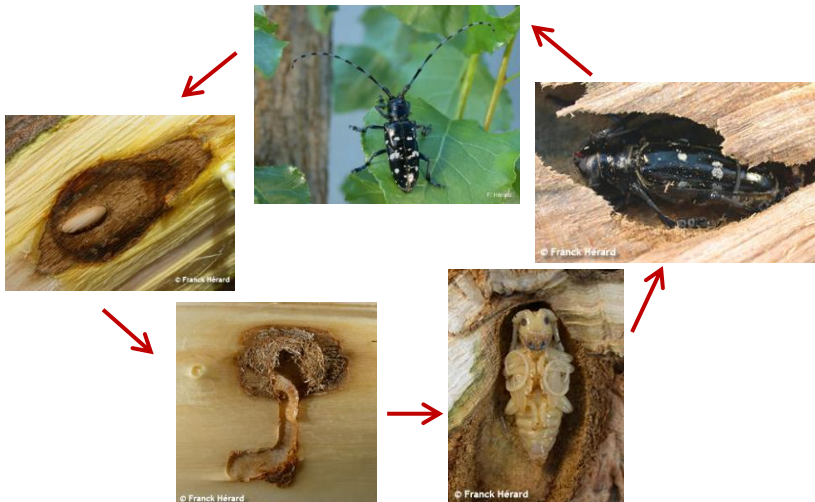
- Introduction: intentional
- 1827: Seeds first brought to Europe
- 1828: Planted in Europe
- 1835: Planted in Freiburg City Forest





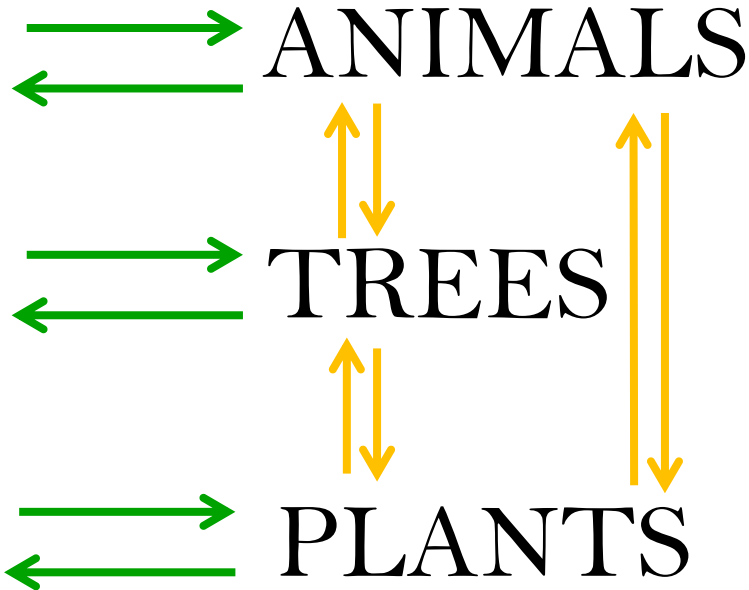
# Asian long-horn beetle

- Introduction: accidental





# Interactions



Responses

Adaptations

Changes



# Products of the task

---

## Audio:

- Poems
- Songs

## Visual:

- Poster
- Photos
- Films

## Interactive:

- Theatre play
- Dance

Any other are welcomes





# Topics

---

1. Reasons for species introductions
2. Risks and challenges of introduced species
3. The role of climate change regarding introduced species
4. Advantages and disadvantages of introduced species
5. Invasive character of introduced species in their non-native environment
6. Social consequences of introduced species
7. Effects of introduced species on people
8. Ecology of introduced tree species
9. Impressions regarding introduced species

OR ANY OTHER TOPIC OF YOUR INTEREST

